



# Sendai City Basic Plan 2021-2030

The Sendai City Basic Plan is a guideline for the community development of Sendai. This plan defines the ideal vision of the city and policy direction required to realize the concept.

We will, together with all people involved in Sendai, continue to take on challenges by sufficiently maximizing our diverse stakeholder's attributes as a renewed "City of Trees", and capitalize on the resources and knowledge cultivated by our predecessors, toward a future where everyone can live an enriched life.



**To be a Renewed City of  
Trees that Continues to  
Take on Challenges**

**- "The Greenest City" SENDAI**



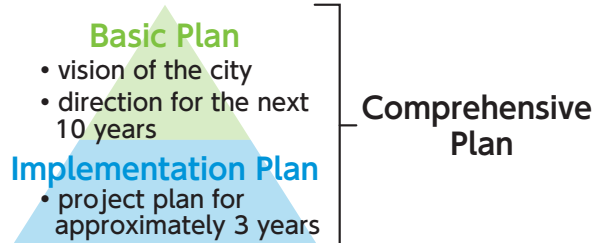
March 2021

City of Sendai

# Structure of the Plan

## What is the Basic Plan?

- The Basic Plan is a framework for the city's vision for the mid-21st century and the direction of its efforts for the next 10 years.
- The Comprehensive Plan is a combination of the Basic Plan and the Implementation Plan (a business plan with medium-term planning goals and specific initiatives to be formulated approximately every three years).

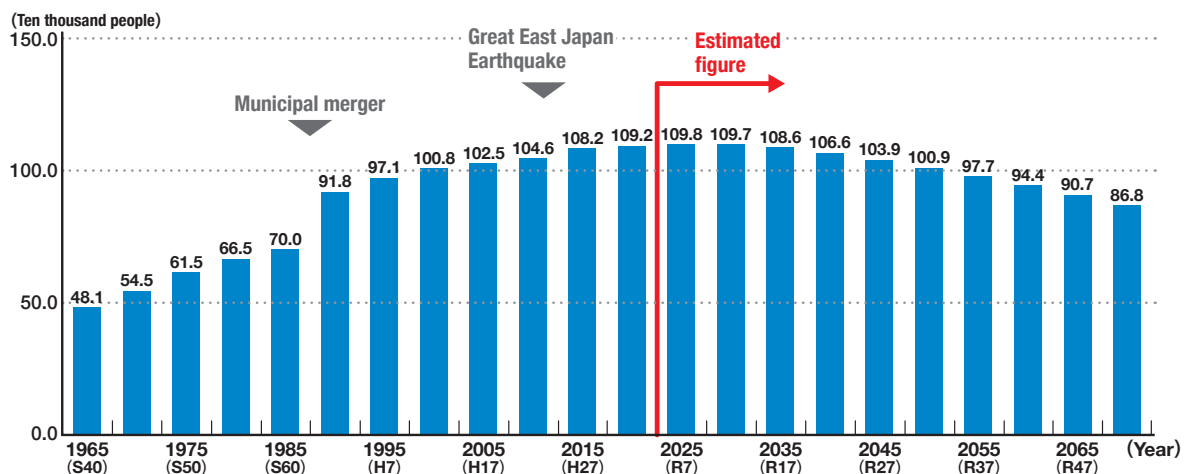


## Plan Period

**10 years**, from fiscal year 2021 to fiscal year 2030

## Future Population Projections

- The population of Sendai City is expected to peak in the near future and then continue to decline slowly, falling below 1 million between 2050 and 2055. The composition of the population is also expected to change with the declining birthrate and the aging population.
- It is predicted that the probability of the decrease in the city's overall population during the period of the Basic Plan is low. However, demographic trends vary from region to region, and it is necessary to provide tailored solutions which meet community characteristics. It is also important to take initiatives to create vitality for the entire city, should the population continue to decline.



### In light of the Novel Coronavirus (COVID-19) Pandemic

Having overcome many hardships in the past, including war damage, pollution, and natural disasters, and in the face of possible future crises, we will continue to protect the safety and security of our daily lives by further enhancing our ability to respond to social changes, by proactively adopting digital technology.

In addition, as people reevaluate their ways of living and work-style, we aspire to become the city of choice by widely promoting that we are working to improve the quality of life in Sendai, a city which offers comfortable living while also being rich in greenery.

## Community Development Vision

### Towards a Renewed City of Trees that Continues to Take on Challenges - “The Greenest City” SENDAI

- Based on the foundations of community development of “*Mori-no-Miyako*” or City of Trees that have been handed down through the generations, we aspire to become a city that is chosen by the world, and our community development vision is “To be a Renewed City of Trees that continues to take on new challenges - “The Greenest City” SENDAI.
- The subheading, “The Greenest City SENDAI”, incorporates various meanings into the word “Green,” which has an affinity with the “City of Trees,” and by transforming the word into a superlative by adding “est,” it indicates the direction of the city’s development, which is always aiming for the highest level with its sight set on the world.

\* “The Greenest City” is a term that is emerging globally to describe the livability of a city, including indicators such as the rate of urban green coverage and the degree of commitment to environmental issues.

## Visions of the City

- The following four “Visions of the City” have been established to deepen each of the four aspects of Sendai’s urban personality, “Environment”, “Coexistence”, “Learning”, and “Vitality”, which have been cultivated through collaborative community development.
- By combining each of the four “Visions of the City” with each aspect of the word “Green”, we hope to realize our goal of becoming “The Greenest City”.

### Green ⇒ Nature

A community that lives with the blessings of nature

- ◆ A community harmonized by its rich nature, lifestyles, and urban functions, where people can experience a sense of character and comfort of living
- ◆ A community that is capable of responding to disasters and contributing to the improvement of disaster prevention in Japan and abroad

### Green ⇒ Comfort

Towards a symbiotic community where diversity drives society

- ◆ A community where diversity is respected and everyone can live with peace of mind, based on mutual support that protects the mind and life
- ◆ A community that transforms the diverse values and experiences of each individual into the power of society as a whole

### Green ⇒ Growth

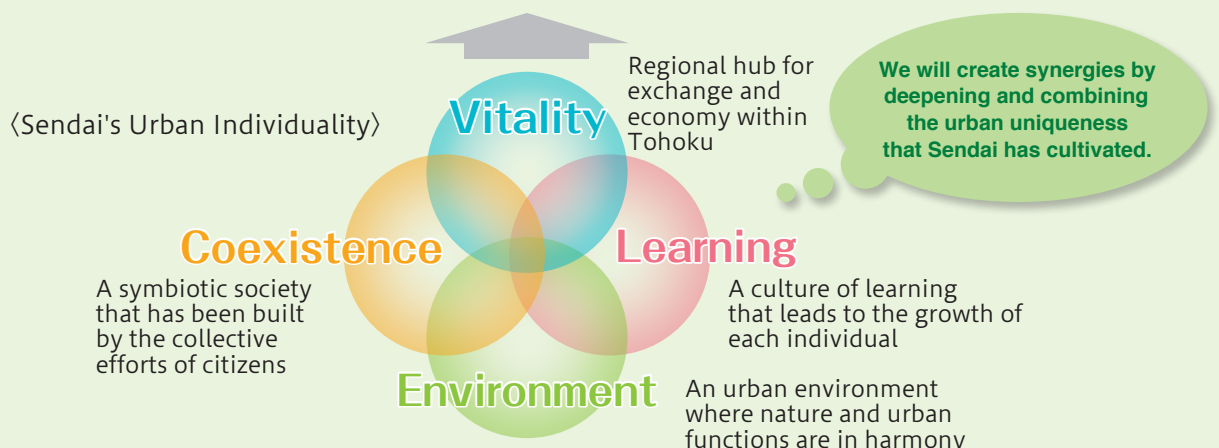
Towards a community full of opportunities for learning and experience

- ◆ A community where children can grow up healthily and experience the joy of learning
- ◆ A community full of growth opportunities for everyone, producing a succession of talented individuals who will contribute to the future of Tohoku and the world

### Green ⇒ Green Light

Towards a community of creativity and possibilities

- ◆ A community that is open to creativity that generates new value and leads to the vitalization of the local economy, resolution of social issues, and vitality of the Tohoku region
- ◆ A community to create global economic activities and diverse interactions



# Challenge Project

Challenge projects are initiatives that focus on Sendai's strengths and current situation in order to realize the vision of the city based on the principles of community development and are listed in the following eight categories. The Challenge Project is the very stage of our challenge to create the future that we want to see, made with our own hands.

## 1 The City of Trees and Water Project

**Goal** To create an urban space to experience the climate and culture of the “City of Trees”

The urban space in harmony with nature, represented by the term “*Mori-no-Miyako*” (City of Trees), is a historical asset of Sendai, and by further improving this allure, we will expand the comfortable space where people can experience the various benefits that greenery brings. In addition, we will create an attractive urban space where people can gather, interact, and want to visit often by creating a space where people can become more acquainted with the rivers, seas, and waterfront areas that form the “City of Trees”.

### Direction of implementation

#### 01 Create an urban space that will be a symbol of the “City of Trees”

Create spaces along Jozenji-dori Avenue and Aoba-dori Avenue that engage both residents and visitors, create opportunities to carry out various ideas which utilize urban space, the design of comfortable spaces, and creation of favorable landscapes



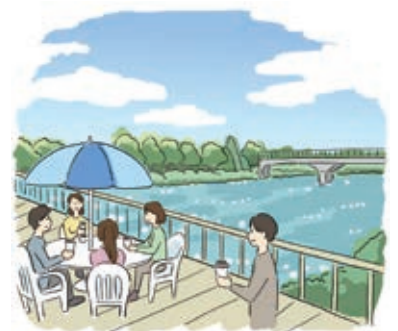
#### 02 Create living spaces where greenery can be enjoyed

Create attractive parks that are in harmony with the surrounding environment, create beautiful landscapes through careful management of street trees and activities to protect and nurture greenery, and create opportunities for enjoying the greenery



#### 03 Create a waterfront space where water can be enjoyed

Create waterfront spaces such as along the Hirose River that can be enjoyed by everyone, including residents and tourists, the utilization of seaside resources such as coastal parks and recreational facilities, and create a network of a bustling eastern coastal area



- **Green Infrastructure of the “City of Trees”** → See P15-P16  
This diagram shows the various functions of the greenery that makes up the framework of the “City of Trees”.
- **Direction of community development in the city center** → See P17-P18  
The direction of community development suitable for a city that will lead Tohoku in the global arena.

## ② Disaster Prevention and Environmental City Project

### Goal **To create a sustainable and flexible urban environment**

In 2015, the “Sendai Framework for Disaster Reduction 2015-2030”, a set of guidelines for international efforts to reduce disaster risks, and the “Paris Agreement”, which aims to promote decarbonization were adopted; the promotion of disaster prevention and risk reduction, and being in harmony with the natural environment are trending globally.

While protecting and utilizing the rich environment of the “City of Trees,” we will communicate to the world a “Disaster-Resilient and Environmentally-Friendly City”. By incorporating disaster preparedness and environmental considerations into our daily lives, we can create a sustainable and flexible urban environment.

#### Direction of implementation

### 01 Incorporate disaster prevention and risk reduction into daily life

Improve the ability to respond to all kinds of crises, including natural disasters and infectious diseases, deepening regional ties through disaster prevention and mitigation efforts, disseminating the experiences and lessons learned from the Great East Japan Earthquake both in Japan and abroad, and creating products and services that incorporate the perspective of disaster prevention and disaster mitigation



### 02 Establish a lifestyle and style of business with low environmental impact

Local production and consumption of energy such as the introduction of renewable energy, reduction of energy consumption and waste generation, promotion of the 3Rs (Reduce, Reuse, Recycle) and substitution of plastics with renewable resources, reduction of food loss, etc.



### 03 Improve the sustainability of urban infrastructure

Improvement of rainwater retention and filtering functions through the enhancement of green infrastructure, improvement of the environmental performance of buildings through the introduction of green buildings, etc., expansion of the use of public transportation, bicycles and other means of transportation, MaaS, and other services that enhance the convenience of daily life, creation of a stable transportation setting for people and goods in the event of a disaster, etc.





# Challenge Project

## 3 Psychological Companionship Project

Goal

**Respect diversity and create a community where people from all walks of life can live with a sense of security**

A diverse range of people live in communities. Their positions, situations, lifestyles, and values are all different, so it is necessary for the entire community to embrace diversity and live together cooperatively. By creating a system where people respect each other's diversity, support, and connect with each other, a community can be created where all people can live with a sense of security and not be isolated.

Direction of implementation

### 01 Create an environment where diversity is respected

Create opportunities to deepen understanding of diversity in terms of age, gender, nationality, and disability, create an environment where people can find a comfortable place to consult and interact with others, creating a living environment where people can experience living comfortably through the implementation of the two fundamental elements of universal design and appropriate consideration



### 02 Prevent isolation and set a framework for connection with individuals

Create relationships that enable local residents to meet and support each other in the community, and create an environment that encourages the social independence of families in need of support such as those who are withdrawn or in poverty



### 03 Create an environment that supports mental health

Create an environment where children can grow up with a sense of security through the prevention, early detection, early responses to bullying and child abuse, and create an environment that provides initiatives that support mental health and protects human rights



## 4 Community Collaboration Projects

Goal

### Create communities that are strengthened by the power of diversity.

Each community has a different history, charms, and challenges, and in order to promote better community development, it is indispensable that the ideal way of collaboration is tailored to each situation. Involving residents and a variety of stakeholders while utilizing their respective knowledge and strengths, an environment will be created in which many challenges will be taken up to improve people's lives, solve regional issues, and create attractions, including securing the means of transportation essential for daily life.

Direction of implementation

#### 01 Create the foundations for diverse collaboration

Create an environment in which anyone with an interest can become involved in community development through the use of public space, visualization and sharing of local issues, as well as an environment in which effective and accelerated efforts can be made to solve local issues through the use of technology



#### 02 Utilizing the power of diverse stakeholders in the community

Utilize the ideas, know-how, and networks of diverse stakeholders to solve regional issues such as means of transportation in the region, improve the living environment such as for raising children and educational environment, and create opportunities for young people to think about and fulfil regional development beyond their generation and status



#### 03 Stimulate interaction in the community

Create an environment that stimulates interaction between communities and diverse stakeholders by making use of the rich natural resources and unique lifestyle and culture of the region, and create a place for free and open interaction where events can be held and local problems can be solved



# Challenge Project

## 5 The Blossoming Smiles for Children Project

Goal

### Create an environment where children's futures can flourish

To create a sustainable future, it is essential to have an environment where children can be raised with a sense of security and where they can have a healthy development. By expanding opportunities for children to take on challenges, they can develop their ability to shape their lives, as we respect their individuality and watch over them in the community. Moreover, we adults will also learn through experiences with children and create a virtuous cycle progressing our society onto a better track.

Direction of implementation

### 01 Create an educational environment that inspires and develops motivation

Create an environment that nurtures children's self-esteem and self-efficacy and encourages them to explore and develop communication skills; further promote collaboration among schools, communities, and families; create opportunities for growth in response to the increasingly information-oriented and globalized society, and ensure and improve the quality of learning opportunities through an optimal combination of online and face-to-face activities



### 02 Create opportunities for growth tailored to the individual

Create opportunities for children to deepen their understanding of diversity in terms of age, gender, nationality, disability, etc., create opportunities for dialogue with people in different positions, and create learning spaces with options tailored to individuality where everyone can grow up with a sense of security, including students who are truant from school and those with developmental issues



### 03 Create an enjoyable environment for child raising

Create an environment where people can seek advice on pregnancy and parenting through various means such as online and at physical venues, enhance learning at home, create an environment where people can go out rest assured and enjoy themselves with their children, and provide more opportunities to experience various types of activities





## 6 Life Design Project

Goal

### Create an environment where people can live their own unique way of life

In an era of the 100-year life expectancy, there are no limitations on age when it comes to learning and working. In addition to raising awareness of the importance of good health- a prerequisite for realizing a fulfilling life according to one's individual style- an environment full of various learning opportunities to become familiar with culture, art, history, etc., and opportunities to play an active role aligned to people's lifestyles will be created. In this way, we will create a vibrant society where diverse personalities can shine and creativity can flourish.

#### Direction of implementation

### 01 Create an environment where there are opportunities for learning and putting actions into practice throughout the community

Create an environment that promotes creativity and familiarity with culture, art, and history; create a system that links learning and experience to the practical application of urban development; and create an environment where creative activities such as music and art become a new appeal of the city



### 02 Create an environment in which everyone can play an active role

Create an environment where each individual can work in a variety of ways to realize their desired careers and lifestyles, and play an active role regardless of age, gender, nationality, disability, etc.



### 03 Support health at every stage of life

Initiatives to promote health at different stages of life by providing opportunities for sports and exercise, improving dietary habits, etc., to create an environment where people who have difficulty accessing medical facilities can receive care easily through the use of technology, etc., and initiatives for an effective nursing care prevention



# Challenge Project

## 7 TOHOKU Future Project

### Goal **Create innovations launched from Tohoku that have a global appeal**

The current situation grappling Tohoku is its declining population amidst other challenges, needs to be seen as an opportunity to create new innovations and envision the future. As awareness of the region increases due to the diversification of risks and ways of working, we aim to create innovations that take advantage of the region's characteristics bringing about social and economic impacts. It will also play a role in spreading the appeal of Tohoku both domestically and internationally by strategically promoting business and attracting visitors from both a global and local perspective.

#### Direction of implementation

### 01 Create innovations in Sendai and Tohoku

Create appealing projects and promote global business through strategic alliances within Tohoku and other cities both domestically and abroad, and create an environment and culture that encourages entrepreneurs and other businesses to take on the challenge of creating social innovation



### 02 Support the growth of industry in Sendai and Tohoku

Create an environment for the creation of new technologies through the accumulation of research and development bases and related industries stimulated by the operation of the Next-generation Synchrotron Radiation Facility, and promote a regional cycle that includes the revitalization of the agriculture, forestry, and fisheries industries in Sendai and the Tohoku region, as well as business initiatives related to local food



### 03 Attract people from all over the world to Sendai and Tohoku

Utilize the rich nature, history, culture, festivals, etc. of Sendai and the Tohoku region, create a variety of experience programs, strategically promote the region, create a safe and comfortable environment for travel, and develop an attractive office environment and an environment for hosting MICE, etc.



## 8 City Center Revitalization Project

### Goal

### Create a city center where people gather and new challenges are born

The city center of Sendai is a key point of interaction where many people gather, and it is imperative for it to be an appealing place that constantly attracts people. To this end, by promoting the development of the city center and developing the infrastructure for business and interaction, an environment will be created where ambitious people can gather and new challenges are born. Furthermore, by creating a variety of different contents through the cooperation of various stakeholders, an attractive urban center will be created as a place to work and enjoy with a high level of mobility.

### Direction of implementation

#### 01 Creating a city that attracts investments

Reconstruction of aging buildings, promotion of office buildings with high-level functionality, facilitation of urban renovation through new utilization of public spaces such as parks and roads, and unused real estate in the private sector, etc.



#### 02 Creating a city center where innovations are born

Fostering a start-up ecosystem by building a culture and community that supports the creation of new businesses presented by companies, entrepreneurs, educational institutions, etc., and promoting innovation by utilizing technology and know-how from industry, academia, and the government sectors



#### 03 Improve the mobility of the city

Reconstruction of the City Hall main building; redevelopment of Kotodai Park; consideration of the development of a music hall, etc.; create an attractive urban environment where many people can gather and interact; create a space where people feel comfortable and want to walk around; improve the mobility environment through the use of technology; and revitalize the central shopping district



# Directions of community development in each

The situation of each area varies, from those with a declining birthrate and an aging population to areas where younger generations are concentrated. In addition, some areas are experiencing environmental changes such as the effects of the Great East Japan Earthquake and the opening of the Tozai Subway Line, and thus, it is necessary to promote initiatives that meet the complex and diversified conditions of the communities.

With this in mind, we have established four “directions of community development”: “to protect the rich nature of our hometown and create a safe and secure community”, “to support each other and create a community where people have enriched lives”, “to create a community where children can grow up in a healthy environment with a rich learning atmosphere”, and “to create a community that is full of uniqueness and bustling with interaction”. Based on the “directions of community development in each ward”, prepared in various events with the participation of the ward residents, we will progress with the creation of unique communities through the sharing of the directions with a wide range of people, including ward residents.



## Aoba Ward

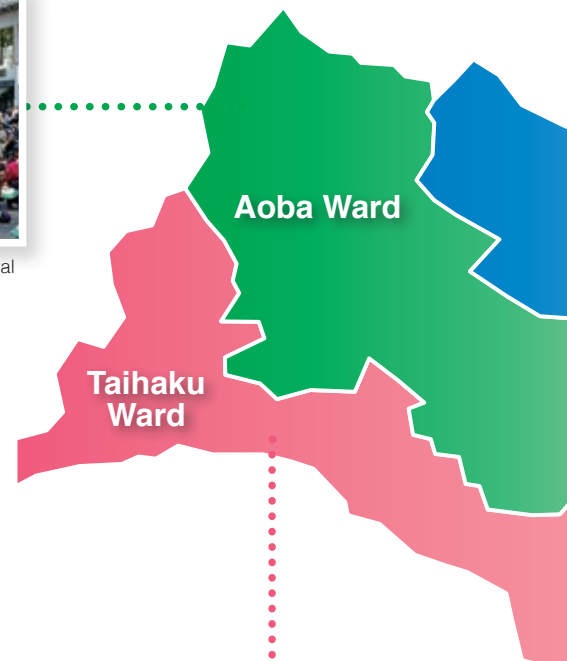
Aoba Ward is characterized by its “diversity,” where modern, urban functions and a rich natural environment coexist. We will continue to upgrade urban functions in the center of the city, ensure regional connectivity and develop the city in response to the further decline in the birthrate and aging population, and rapid population growth in the Miyagi district (the area under the jurisdiction of Miyagi General Branch, City of Sendai).



Sendai Aoba Festival

### Direction of community development

1. A vibrant community where many people can gather and interact with each other
2. A community where everyone can live a healthy and fulfilling life, which is understanding and supportive of each other
3. A community where people can feel safe and secure by increasing regional disaster prevention and crime prevention capacities
4. A city of nature, history, and abundance of culture, *Mori-no-Miyako*, the City of Trees

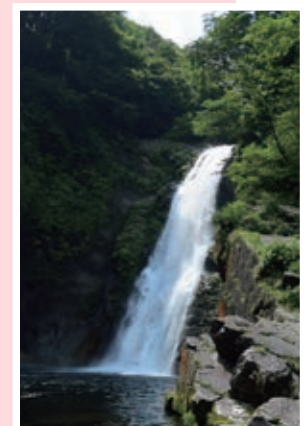


## Taihaku Ward

Taihaku Ward is blessed with rich local resources such as Mount Taihaku, the origin of the ward's name, and Akiu Hot Springs. It also plays a role as a regional hub in the southern part of the Sendai metropolitan area. We will promote developments that take advantage of the diverse regional characteristics areas, including the JR Nagamachi Station area undergoing development, the housing extending along the areas of the right bank of the Natori River, the hilly residential area, Mount Taihaku, and the Akiu area rich in an abundance of nature.

### Direction of community development

1. A community where people can support each other and live a healthy life in their unique way
2. A community that is resilient to disasters and a safe and secure place to live
3. A vibrant and pleasant community that makes the most of its rich local resources
4. A community where people of all ages can interact, gather and hold activities
5. A community where diverse regional characteristics can be fully harnessed



Akiu Otaki Waterfall



## ward



## Izumi Ward

Izumi Ward is characterized by a variety of unique areas, including the Izumi Chuo area with its extensive urban functions, industrial parks clustered in the north, hilly residential area with its comfortable living space, and the western area with its rich natural environment. While taking into account the declining and aging population, we will continue to promote urban development that takes advantage of the characteristics of each area.

### Direction of community development

1. A safe community where each individual can lead a rich and fulfilling life in their own unique way
2. A lively community that attracts people by making the best use of its appealing contents
3. A healing community where everyone can feel and experience the rich greenery and nature of each season
4. A community of settlement that continues to be chosen for its refined townscape and daily comforts



Izumi Chuo Station Area



## Miyagino Ward

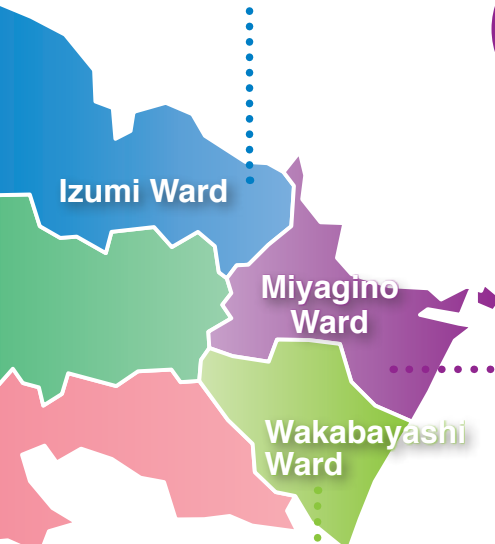
Miyagino ward stretches from the east exit of Sendai Station to the port of Sendai-Shiogama, and its population composition varies from area to area. We will proceed with urban development according to the characteristics of each area, including the city center, which is undergoing development, the northern part of the city which attracts younger generations and the hilly area with a high percentage of elderly people, and the coastal area which has overcome great disasters.

### Direction of community development

1. Create a seaside hometown: a community where people gather and connect their thoughts
2. Create a symbolic area in the heart of the city: a community lively with activity and makes the most of its potential
3. Create a comfortable community: a community where people can support each other and continue to enjoy life with a sense of security
4. Create opportunities to encounter new charms: a community to learn about the hometown and experience its vitality



Tsutsujigaoka Park



## Wakabayashi Ward

The population of Wakabayashi Ward has been increasing significantly with the opening of the Tozai Subway Line. We will promote urban development with a focus on the changes in the living environment and community development that are affected by the new subway line, the characteristics of the area such as the presence of large-scale industrial clusters and historical assets, and the recovery from disasters.

### Direction of community development

1. A community that cohabits alongside its rural landscape, waterfront and natural environment, and utilizes the experiences of natural disasters into future daily lives
2. A warm community where new and old residents can socialize and support each other
3. A community where people live in the heart of history and nurture the charm of the community
4. A community that creates changes through a variety of collaborations



Eastern Coast



# Management of the Municipal Government to Create the Future

## The Basic Stance of the Municipal Government

### 1 Build the foundations for sustainable urban management

We will promote highly viable administrative and fiscal management by stimulating the local economy to cultivate tax sources and introduce private sector vitality, as well as promote public facility management and data-based policy formation.

Moreover, we will build a crisis management system that can be flexible in dealing with disasters and infectious diseases by developing human resources that can respond to crises and creating an organization that can continue to provide civic services even in times of emergency.

### 2 Accelerate community development through collaboration

To promote the participation of a wide range of individuals in policy formation, support spontaneous community development by residents, and accelerate citizen collaboration and public-private partnerships while working to solve local issues and revitalize the community.

We will also create a system that allows ward offices to respond to the needs of local communities in a more detailed manner, and create an environment that encourages the development of employees who will promote citizen collaboration and community development.

### 3 Create an organization capable of responding flexibly to changes in society

We will actively incorporate the knowledge of the private sector, educational institutions, and other stakeholders to create an organizational culture that facilitates the challenge of realizing innovative ideas. At the same time, we will work to improve the quality and efficiency of our operations by creating an environment in which staff members can demonstrate their abilities with a sense of motivation and a diverse range of work styles, as well as promoting initiatives to enhance the knowledge and skills of each employee.

### 4 Realize a richer lifestyle for residents through digitalization

By utilizing digital technology to improve the convenience of civic services, solve problems and promote communication, we will create an environment where people can live a rich and secure lifestyle with a variety of options. We will also work to create new value by promoting advanced experimental projects and smart city-type urban development through collaboration among industry, academia, government, and financial institute sectors.

### 5 Fulfill the responsibilities of a major city

We will create vitality for the entire Tohoku region by utilizing advanced urban functions in terms of economy, exchange, and culture. By promoting decentralization and regional cooperation, we will secure the authority and tax resources appropriate for a major city, and create an environment in which we can provide civic services while harnessing the merits of scale.

## Urban Structure Formation Policy

To pass on the urban infrastructures of “*Mori-no-Miyako*”, the City of Trees, to future generations as a symbol of Sendai and the pride of its people, we will promote the development of function-oriented urban structures and a public transportation system in an integrated manner, and at the same time, we will promote the formation of a green network and a sound water cycle to create a sustainable city in harmony with nature.

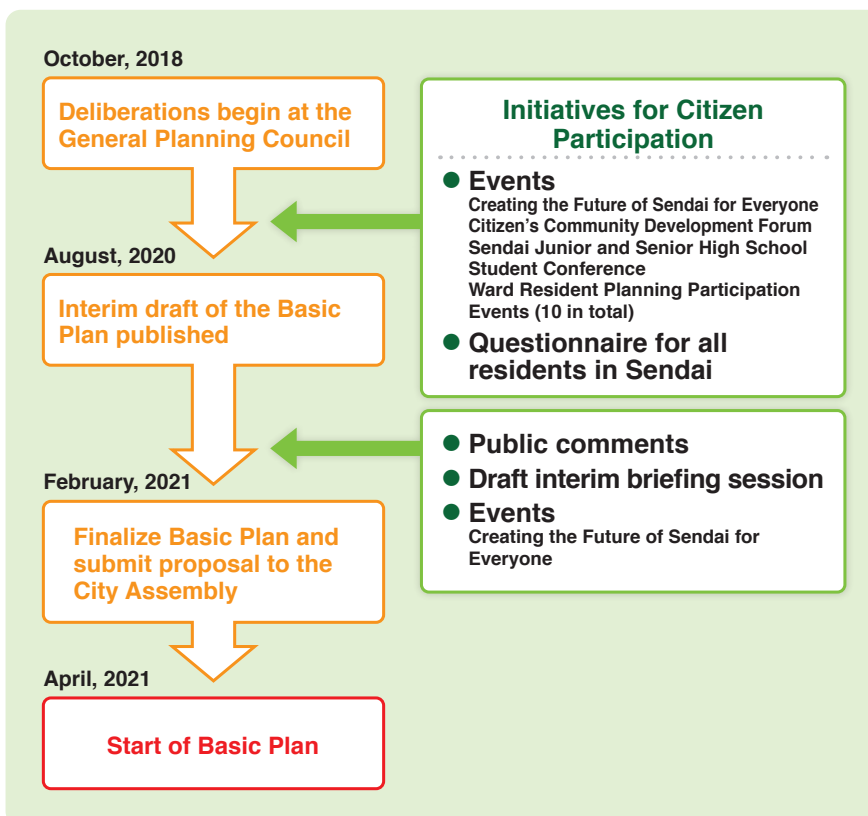
## System of Measures

To realize the vision of the city, Sendai City Hall will systemize measures and carry them out along with collaboration with various stakeholders.

# Promotion of the Plan

- In order to allow as many people possible to participate in the challenge to achieve the basic plan, we will widely share and actively provide information regarding its contents.
- With the participation of diverse stakeholders, we will consider the ideal pathways for realizing our goals and create opportunities for collaborations.
- To progress with the Basic Plan, we will formulate an implementation plan approximately every three years, adjust to the current social conditions in preparation for each year's budget, and formulate plan projects while taking revisions into consideration.
- As part of the progress management of the implementation plan, we will conduct evaluations such as public questionnaires and self-appraisals, etc. and progress will be reported to the City Assembly as well as to the public.
- When revising the implementation plan any required alteration will be decided upon when to generate more effective projects, based on the results of evaluation and checks, social conditions, and trends in the private sector.

# Progress of Formulation



Citizen's Community Development Forum



Sendai Junior and Senior High School Student Conference



Ward Resident Planning Participation Events



Creating the Future of Sendai for Everyone (2020)

## Progress of Deliberations

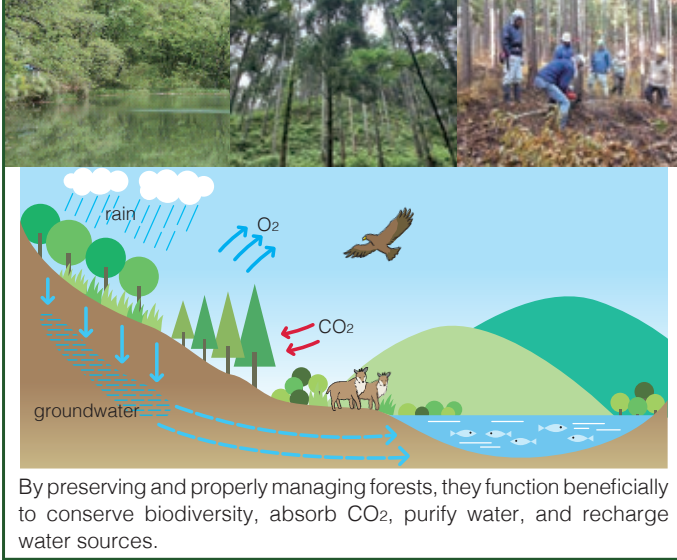
- General Planning Council Total 11 sessions
- Community and Livelihood Subcommittee Total 4 sessions
- City and Vitality Subcommittee Total 4 sessions



General Planning Council

# Green Infrastructure in *Mori-no-Miyako*, the City of Trees

## Remote mountains and rural landscapes

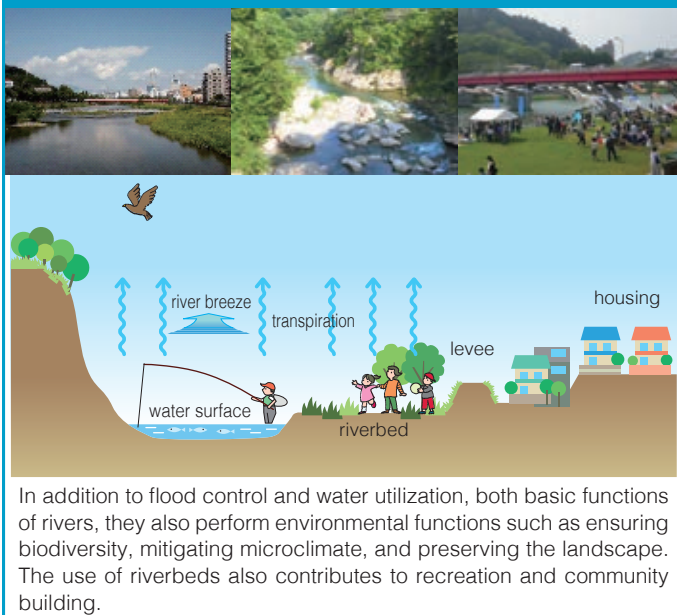


### Legend

	Greenery in mountainous and hilly areas
	Rural greenery
	Axis of greenery nurtured by water
	Urban greenery
	Coastal greenery
	Greenery hub



## Rivers



## Urban areas (city center)

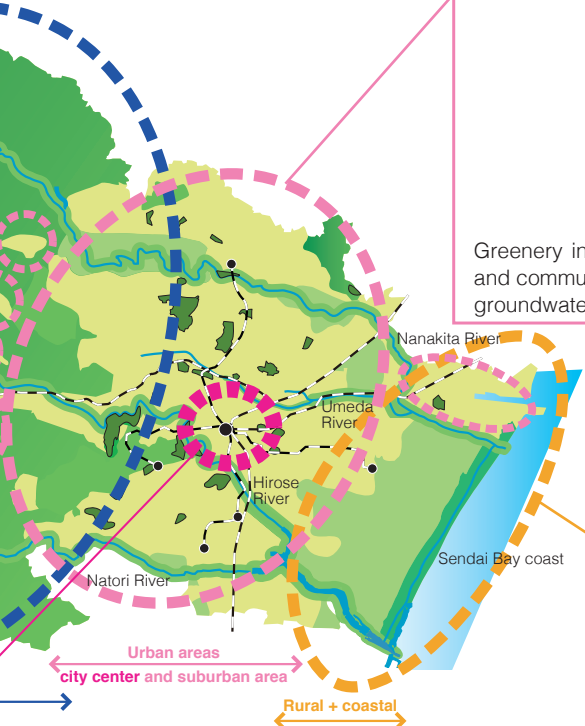


Sendai is a unique city in that its diverse nature is dispersed over the city. This includes forests, rural landscapes, urban greenery, and agricultural land in eastern Sendai, as well as a river that flows from its source to its estuary.

The diverse greenery that makes up these frameworks play a variety of roles, such as reducing flood damage, recharging water sources and groundwater, purifying water, conserving water, and mitigating microclimates.

### Urban areas (non-city center)

Greenery in urban areas serves functions such as enhancing the landscape, recreation, and community building. It also contributes to the mitigation of flood damage, recharging of groundwater, and water purification by increasing the infiltration of rainwater.



the promotion of green buildings, urban landscape enhancement, and recreation. It recharging of groundwater, and water

### Rural and Coastal

Cool sea breezes in summer reach inland through the flat terrain in the eastern part of the city, and help moderate rising temperatures in the urban areas. Disaster prevention forests in coastal areas provide wind and tidal protection and enhance multiple defense functions such as coastal levees and elevated roads to reduce tsunami damage. Conservation of farmlands, wetlands, and forest areas contributes to the preservation of biodiversity and the unique landscape of the region.



# Direction of community development in the city center

## General direction of community development in the city center

### Urban Function Enhancement Zone

We will create new value and attraction in the Sendai Station and main street area with commercial facilities that hold a wide market area, and business operations that play a central role in Tohoku which are becoming the nucleus of the dense metropolitan area of central Sendai, by generating a business networking environment that is globally competitive.

### Commercial, Business, and Residential Zone

We will reinforce the value and convenience of the central area by integrating various advanced functions harmonized with peoples' living, learning, working, and entertainment. Combining these functions will increase the value of the area in the city center.

Through integrating a variety of local activities in off-street zones that can be enjoyed during the day and night, we will attract visitors, connect existing major spots in the city center, and enhance the overall appeal of the city center while the positive effect ripples out to neighboring areas.

We will enhance the brand power of the "City of Trees" and the "Disaster Resilient and Environmentally-Friendly City," by actively communicating information to people in Japan and abroad, promoting the creation of a safe, secure, and comfortable environment by creating urban spaces rich in lush greenery, and improving disaster prevention capabilities and environmental performance.



Area with historical and cultural resources, academic and research institutions, and international venues in the City of Trees

Area with a high concentration of restaurants, etc.

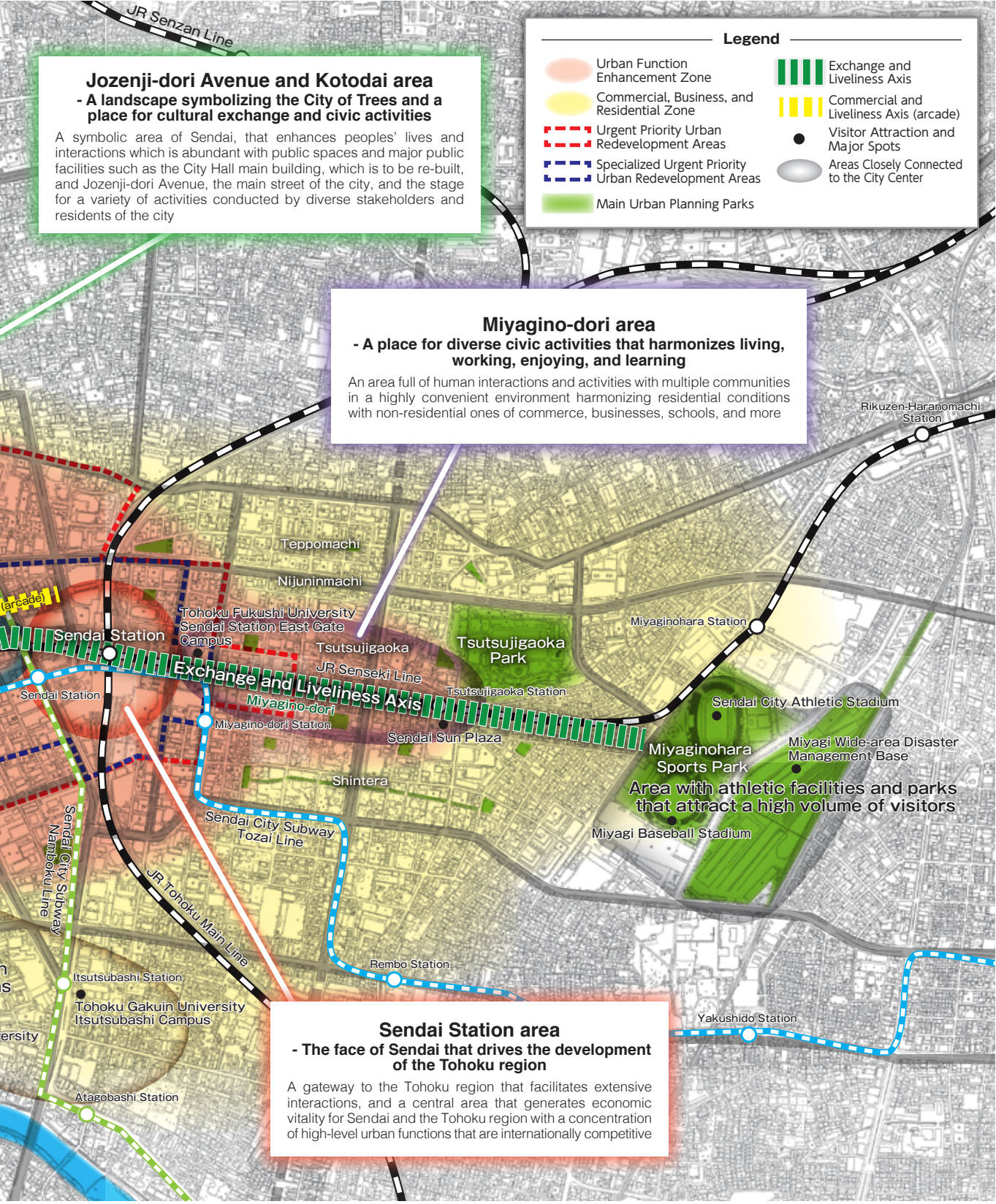
### Aoba-dori Avenue and Ichibancho Area - A place of dynamic commerce and encounters

An area where business, commerce, and culture are thriving around Aoba-dori Avenue and its arcades, bringing opportunities for encounters and activity to the region

Area with a high concentration of higher education institution



Based on the urban environment of the *Mori-no-Miyako* the “City of Trees”, with its rich greenery and beauty intact since the feudal era, and the city’s unique identity as a “Disaster Resilient and Environmentally-Friendly City”, it aims to create and lead Tohoku as a dynamic urban center that is globally competitive, safe, generates bustle and interaction, and ongoing economic vitality.



## **Sendai City Basic Plan (Outline Version)**

**March 2021**

Policy Planning Section, Policy Planning Department,  
City Planning Policy Bureau, City of Sendai

7-1 Kokubuncho 3-chome, Aoba-ku, Sendai-shi,  
Miyagi-ken 980-8671 Japan

TEL : 022-214-1245

FAX : 022-268-4311